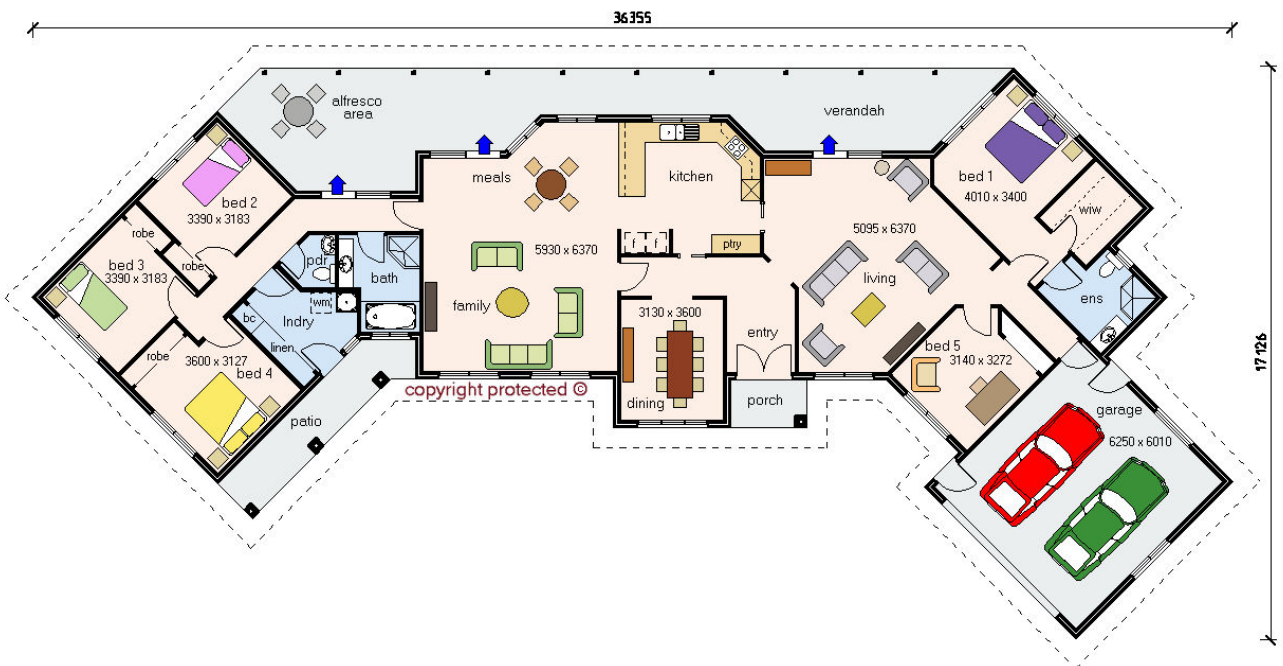


# The Hamersley



ESTATE COLLECTION



- \* 5 Bedrooms
- \* Ens, WIW
- \* Meals, Family
- \* Living, Dining
- \* Verandah
- \* Double garage
- \* Area 350.73 sqm



[www.craftsmanhomes.com.au](http://www.craftsmanhomes.com.au)

c326.dab

COPYRIGHT: This drawing is the property of Craftsman Homes, reproduction in whole or part is strictly forbidden without the written consent of the Managing Director of Craftsman Homes. Failure to observe will result in Legal Action being taken